

**Common Land Unit**

 Non-Cropland	 Tract Boundary
 Cropland	 PLSS

2024 Program Year  
Map Created January 02, 2024

2022 NAIP Ortho Imagery  
**ALL CROPS ARE NON-IRRIGATED AND**  
**INTEDED USE IS GRAIN UNLESS SPECIFIED**

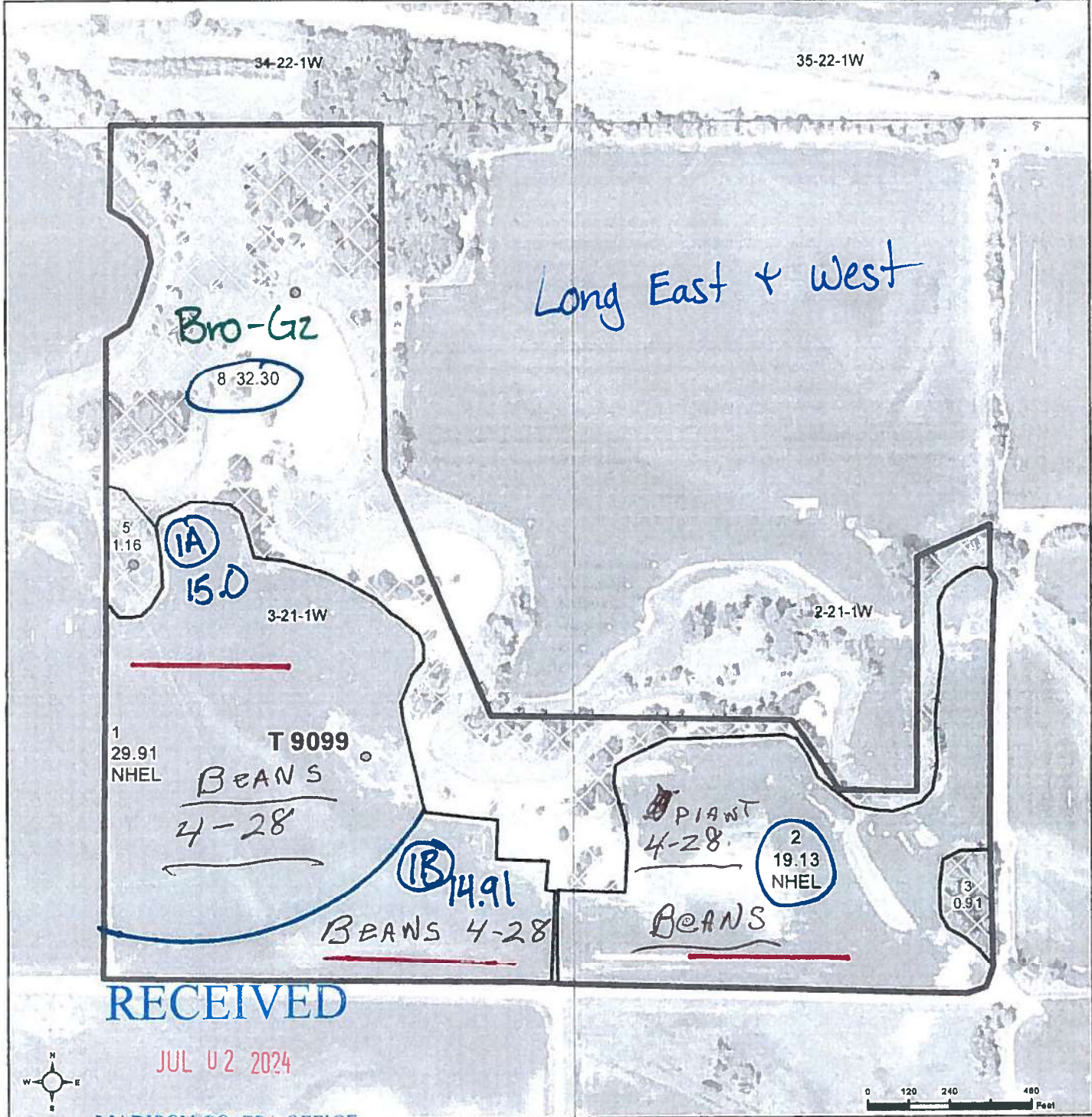
**Farm 4530**  
**Tract 9098**

**Wetland Determination Identifiers**

-  Restricted Use
-  Limited Restrictions
-  Exempt from Wetland Provisions

Tract Cropland Total: 52.53 acres

United States Department of Agriculture (USDA) Farm Service Agency (FSA) maps are for FSA Program administration only. This map does not represent a legal survey or reflect actual ownership, rather it depicts the information provided directly from the producer and/or National Agricultural Imagery Program (NAIP) imagery. The producer accepts the data 'as is' and assumes all risks associated with its use. USDA-FSA assumes no responsibility for actual or consequential damage incurred as a result of any user's reliance on this data outside FSA Programs. Wetland identifiers do not represent the size, shape, or specific determination of the area. Refer to your original determination (CPA-026 and attached maps) for exact boundaries and determinations or contact USDA Natural Resources Conservation Service (NRCS).



MADISON CO. FSA OFFICE  
Common Land Unit  Tract Boundary  
 Non-Cropland  PLSS  
 Cropland

2022 NAIP Ortho Imagery  
**ALL CROPS ARE NON-IRRIGATED AND  
INTEDED USE IS GRAIN UNLESS SPECIFIED**

2024 Program Year  
Map Created January 02, 2024  
**Farm 4530  
Tract 9099**

Tract Cropland Total: 49.04 acres

- Wetland Determination Identifiers
- Restricted Use
  - Limited Restrictions
  - Exempt from Wetland Provisions

United States Department of Agriculture (USDA) Farm Service Agency (FSA) maps are for FSA Program administration only. This map does not represent a legal survey or reflect actual ownership; rather it depicts the information provided directly from the producer and/or National Agricultural Imagery Program (NAIP) imagery. The producer accepts the data 'as is' and assumes all risks associated with its use. USDA-FSA assumes no responsibility for actual or consequential damage incurred as a result of any user's reliance on this data outside FSA Programs. Wetland identifiers do not represent the size, shape, or specific determination of the area. Refer to your original determination (CPA-026 and attached maps) for exact boundaries and determinations or contact USDA Natural Resources Conservation Service (NRCS)